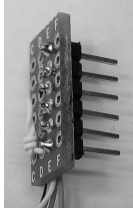


Target Connector J3 .. J7



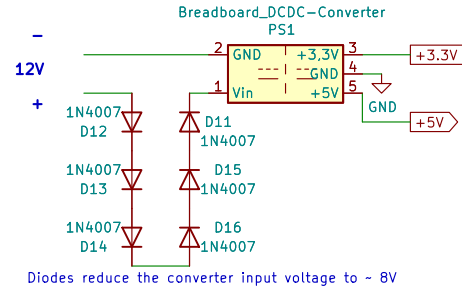
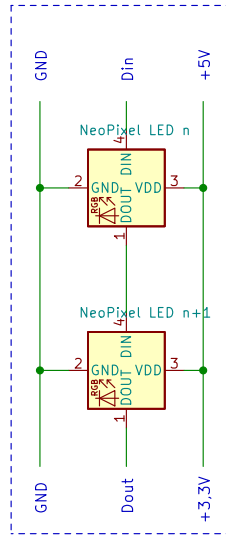
J3
 1 blue
 2 red
 3 black
 4 yellow
 5 white
 6

Board Connector J10 .. J18

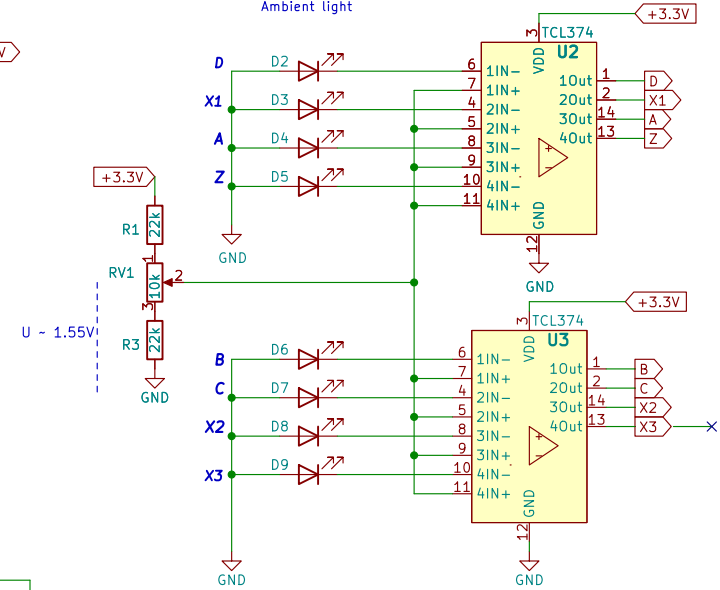


J1
 1
 2
 3
 4
 5
 6
 7
 8
 9

Neopixel wiring

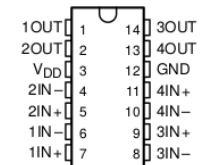
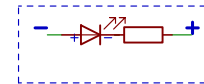


Not used
 D1
 Ambient light

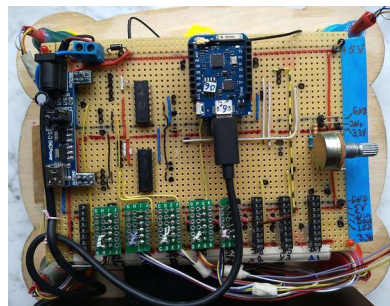
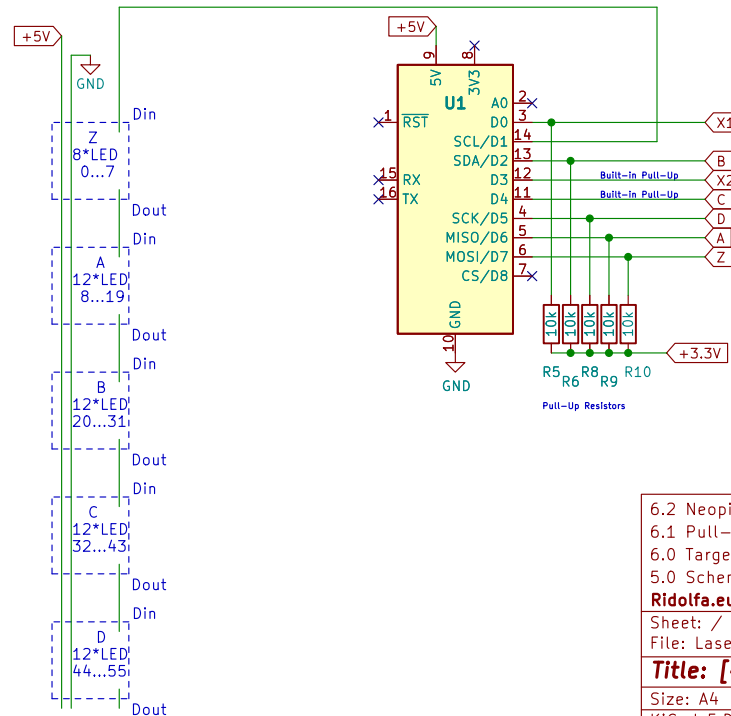


X1, X2, X3 not used

LED used as Sensor



WeMos_D1_mini



6.2 Neopixel supply: +5V instead of 3.3V
 6.1 Pull-Up Resistors connected
 6.0 Target Diode connections changed for more sensitivity
 5.0 Schematic and PCB Redesign without I/O Expander
Ridolfa.eu

Sheet: /
 File: LaserPeng.kicad_sch

Title: [40]LaserPeng

Size: A4 Date: 2021-02-06

KiCad E.D.A. kicad 6.0.11-2627ca5db0-126-ubuntu20.04.1

Rev: 6.5

Id: 1/1