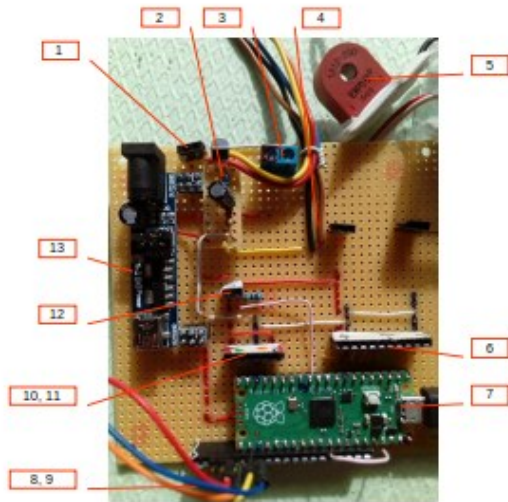
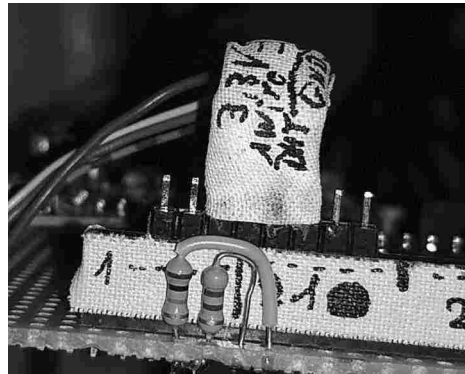


Boiler control board

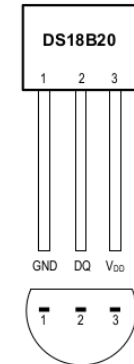


- (1) 3,3V (Test-Pins)
- (2) Phase L1, RC PWM board
- (3) J1 12V power supply
- (4) Phase L2, L3
- (5) Current Detector Sensor
- (6) U5 LoRa device connector
- (7) U6 USB Pico
- (8) J6 DHT
- (9) J6 1Wire / DS18B20
- (10) J3 Buttons
- (11) J2 Neopixel
- (12) J Current Detector board connector
- (13) U4 DC-DC converter 12V → 3,3V / 5V

DHT-1Wire Connector

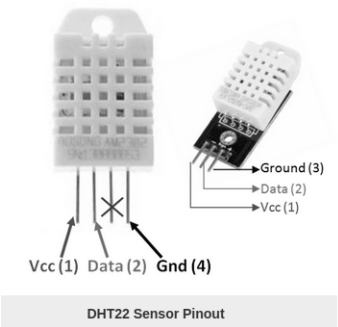


LoRa chip with antenna



BOTTOM VIEW

TO-92
(DS18B20)



Ridolfa.eu / RolfS.

Sheet: /Misc/
File: p50Heater3.kicad_sch

Title: [50]Heater Control and Power Electronics

Size: A4 Date: 2022-06-25
KiCad E.D.A. kicad 6.0.11-2627ca5db0-126-ubuntu20.04.1

Rev: 2.4a
Id: 3/3